

JET HAWK 1

AIR POWERED GLIDER

This package contains:

- 1 Jet Hawk Glider
- 1 Strato Launcher®
- 3 paper airplanes with directions



WARNING

HIGH-POWERED PROJECTILE — STRIKING HAZARD

KEEP THESE INSTRUCTIONS FOR FUTURE REFERENCE—DO NOT DISCARD.

ADULT SUPERVISION DURING ASSEMBLY AND USE IS RECOMMENDED.

Uncle Milton Industries are not responsible for injury or damage resulting from misuse of this product.

IMPORTANT NOTICE: THIS PRODUCT OPERATES ON POWERFUL AIR PRESSURE. IMPROPER USE MAY RESULT IN PERSONAL INJURY OR PRODUCT DAMAGE. READ AND FOLLOW INSTRUCTIONS AT ALL TIMES.

PLEASE READ THESE SAFETY GUIDELINES BEFORE USING PRODUCT:

- Use outdoors only in large open spaces.
- Never stand in front of Strato Launcher when launching.
- Never activate Strato Launcher near face, ears, eyes, or mouth.
- Never point or launch airplane at people or animals.
- Keep spectators at least ten feet from launcher and rocket.
- Do not fly near busy roads, buildings, power lines, trees, or other obstructions.
- Do not fly in adverse weather, electrical storms, rain, or high winds.
- Flying in extreme hot or cold temperatures may negatively affect performance. and lead to damage of the product.

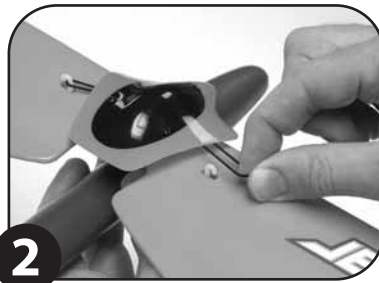
Assembly Instructions

NOTE: TOOL REQUIRED - SMALL SCREWDRIVER



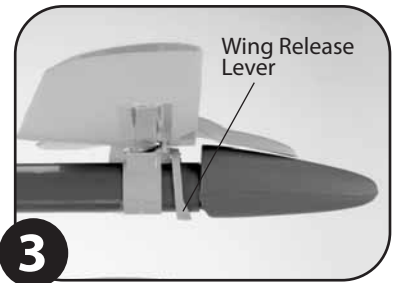
1

- a. Carefully remove plane from package and lay out as shown above.
- b. Check for damage. Do not fly if damaged.
- c. Two rubber bands hang loosely from hook under canopy.



2

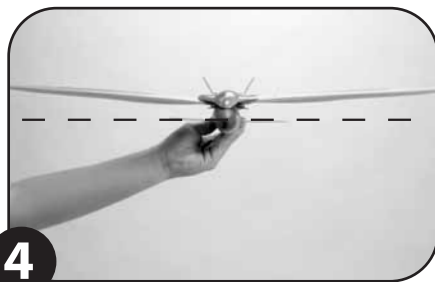
- a. Reach under canopy and pull rubber band over hook on wing. Do this for both sides.
- b. Check rubber bands to make sure they are not twisted.
- c. If rubber bands come off canopy, you may need to reattach by removing the canopy. (see Fig. 12-14)



3

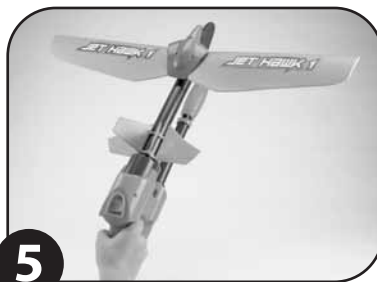
- a. Check to see if wings open correctly by first folding wings into the back position. (see Fig. 6)
- b. Gently push wing release lever toward the rear of the plane.
- c. Wings should open easily with little friction.

Preflight Inspection - Check before each flight



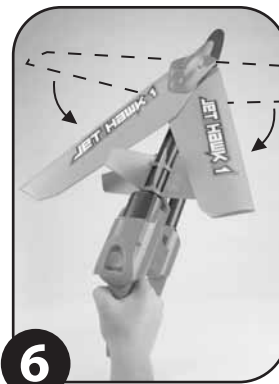
4

Make sure wings are horizontally straight and smooth. Check wing edges and tips and remove any bends or wrinkles.



5

Check damage to wings, tail section or nose cone that might cause erratic flight, loss or damage.



6

Check wing latch mechanism. Do not launch if wings do not stay back in folded position.

Flight Procedure

IMPORTANT! READ SAFETY INFORMATION BEFORE PROCEEDING!



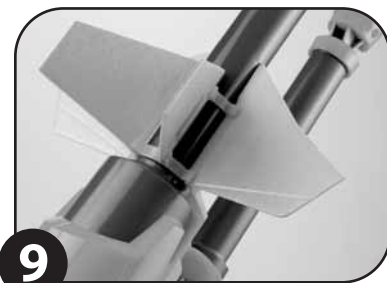
7

Pump Strato Launcher 10 - 20 full pumps. **Do not exceed 20 pumps.**



8

Slide airplane onto Strato Launcher tube.

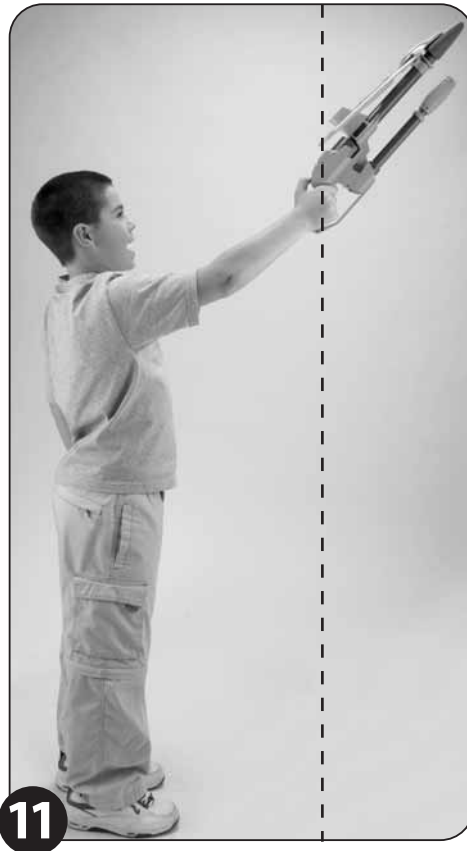


9

Be sure to align the stabilizers over the launch rails.



10 Move the wings back to the folded position. **Never launch in the wing-open position. Damage may occur to the plane.**



11

Ready to Launch

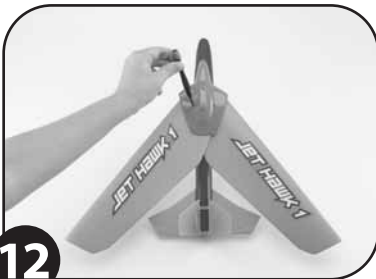
- Point Strato Launcher up at approximately a 65° - 75° angle from the ground. See Fig 11.
- Handle should be perpendicular to the ground as shown by the dotted line in the photo.
- Hold the pump still and wait for the metal ball to stop moving. (Pump will not activate if ball is rolling around!)
- While holding the pump at the correct angle, press the launch button with a slow, firm action.
- Airplane should launch upward with wings deploying mid-flight. Plane is designed to glide 5-20 seconds with a variety of turns and banks depending on weather conditions.

Having Difficulty Firing Pump?

- Try activating the pump without the plane on the launcher.
- Start with the pump pointing directly overhead.
- Lower the nose of the launcher gradually, a quarter to half inch at a time. Press the button firmly each time you lower it, then release it.
- When the launcher activates, you have found the correct angle.

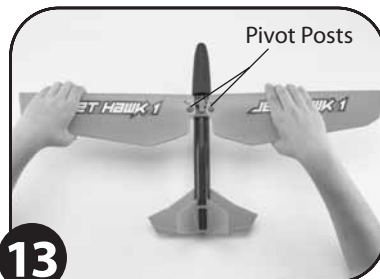
Your Strato Launcher has a built-in safety feature that will only allow your plane to launch in a 65° -75° upward angle. This is for your protection and for those around you. Do not over-pump: 20 pumps maximum.

Canopy and Wing Replacement



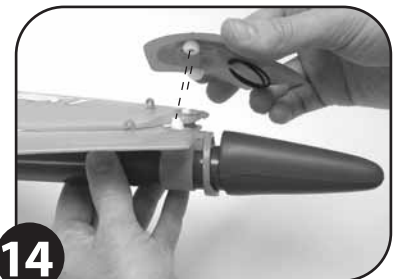
12

- Loosen the two 2.5-mm screws on the canopy by using a small screwdriver.
- Remove canopy and wings from fuselage.



13

- Place new wings on plane by aligning holes with corresponding pivot post.
- Reattach canopy using 2.5-mm screws.
- Two rubber bands should hang loosely from hook under canopy (see figure 14). Canopy should rest on pivot posts with screws tightened firmly against canopy.

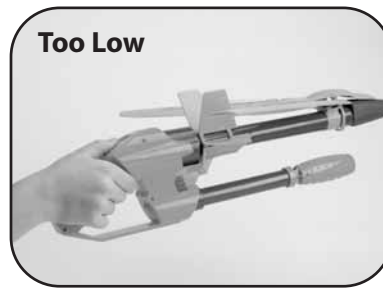


14

- No gap should exist between canopy and screw.
- Repeat assembly steps 1-3 to attach rubber bands.

Troubleshooting Guide

• STRATO LAUNCHER DOES NOT ACTIVATE



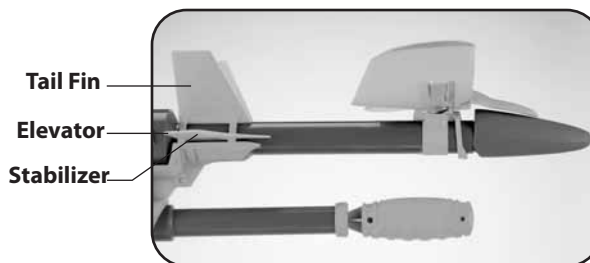
Make sure Strato Launcher is pointed in the correct launch angle (with the handle perpendicular to the ground). If the launcher is pointed too high or too low, it will not activate. This is a built-in safety mechanism.

• PLANE DOES NOT LAUNCH OFF OF LAUNCHER



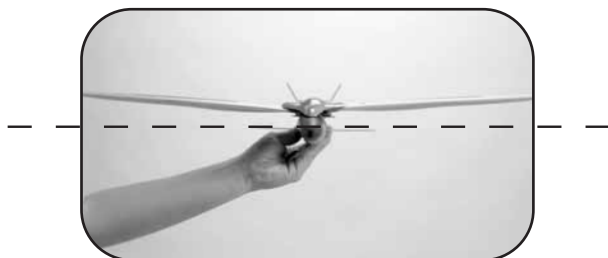
Check to make sure you have pumped the launcher 10-20 times and that it is at correct launch angle.

• PLANE GOES UP, THEN DIVES OR SWOOPS



Stabilizers may require adjustment or realignment. Try bending elevators up slightly.

• PLANE FLIPS OVER LEFT OR RIGHT DURING LAUNCH OR FLIGHT



Check to make sure one wing is not higher than the other. Make sure wings are not damaged.

Plane flips right: Left wing is too high.
Plane flips left: Right wing is too high.
Straighten out any dents on front edges of wings or tail section.

• WING SWINGS FORWARD UPON LANDING

For safety, the wings are designed to swing forward on impact. Gently move wing(s) back into proper position. DO NOT FORCE! If necessary, remove canopy and readjust wings (refer to assembly instructions).

KEEP THESE INSTRUCTIONS FOR FUTURE NOT DISCARD.

Problems? Before taking this product back to the store, please call us.
We can help! Call 1-888-742-2484 or visit www.unclemilton.com.

Uncle Milton[®]

Uncle Milton Industries – Westlake Village, CA 91362
1-888-742-2484 Fax: 818.707.0878 www.unclemilton.com
© 2007 UMI, Inc. All rights reserved.
Jet Hawk Glider is a registered trademark of UMI.