

ROTO ROCKET

AIR POWERED ROCKET



WARNING

HIGH-POWERED PROJECTILE – STRIKING HAZARD

**KEEP THESE INSTRUCTIONS FOR FUTURE REFERENCE—DO NOT DISCARD.
ADULT SUPERVISION DURING ASSEMBLY AND USE IS RECOMMENDED.**

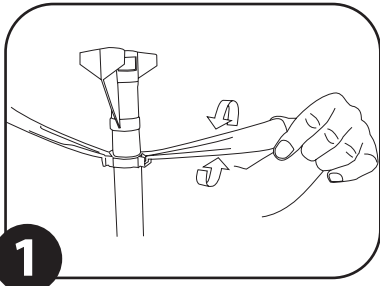
Uncle Milton Industries is not responsible for injury or damage resulting from misuse of this product.

IMPORTANT NOTICE: THIS PRODUCT OPERATES ON POWERFUL AIR PRESSURE. IMPROPER USE MAY RESULT IN PERSONAL INJURY OR PRODUCT DAMAGE. READ AND FOLLOW INSTRUCTIONS AT ALL TIMES.

PLEASE READ THESE SAFETY GUIDELINES BEFORE USING PRODUCT:

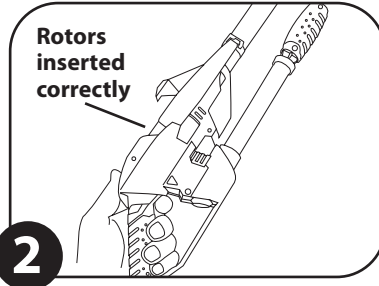
- Use outdoors only in large open spaces.
- Never stand in front of Strato Launcher® when launching.
- Never activate Strato Launcher® near face, ears, eyes or mouth.
- Never point or launch rocket at people or animals.
- Keep spectators at least 10 feet from launcher and rocket.
- Do not fly near busy roads, buildings, power lines, trees, or other obstructions.
- Do not fly in adverse weather, electrical storms, rain, or high winds.
- Flying in extreme hot or cold temperatures may negatively affect performance and lead to damage of the product.

Preflight Procedure



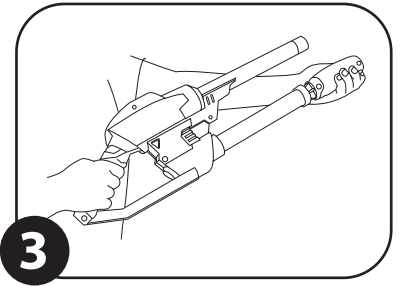
1

Twist the rotor blades exactly as shown. You can experiment by increasing or decreasing the angle, causing the rotors to spin faster or slower during reentry. Both rotor blades must be twisted in the same direction.



2

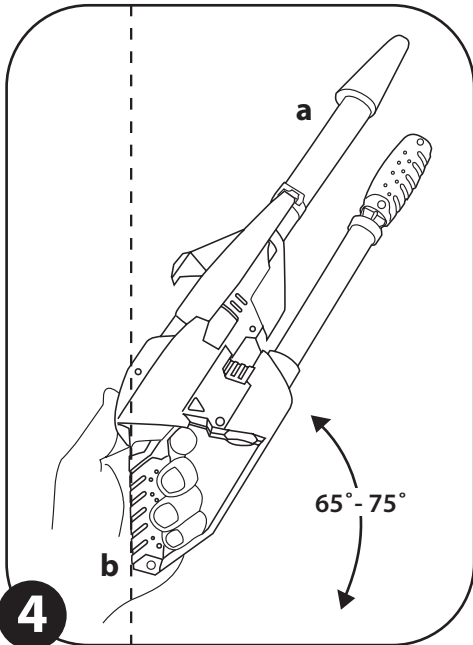
Slide Roto Rocket onto the Strato Launcher tube, making sure the rotors are inserted into the rotor notches in the launcher.



3

Pump Strato Launcher 10 to 20 full pumps. Do not exceed 20 pumps.

Ready to Launch



1. Point Strato Launcher up at approximately a 65° to 75° angle from the ground (see figure 4, part a). The handle should be perpendicular to the ground, as shown by the dotted line (see Figure 4, part b).
2. Hold the pump still and wait for the internal metal ball to stop moving. The pump will not activate if the metal ball is rolling around!
3. While holding the pump at the correct angle, press the launch button slowly and firmly.
4. The Roto Rocket should launch upward with wings deploying mid-flight. Roto Rocket is designed to fly 5 to 20 feet.

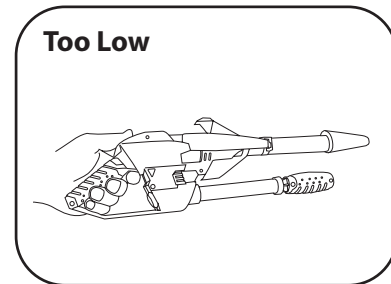
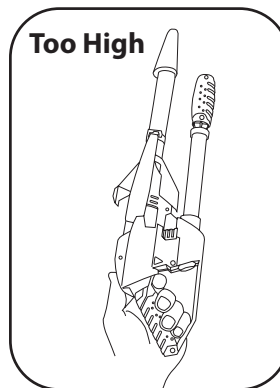
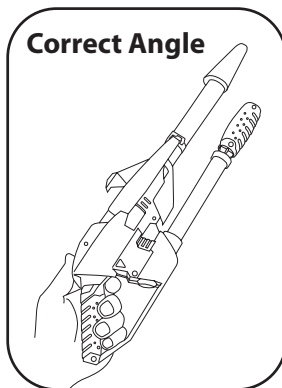
Having Difficulty Launching?

Note: Strato Launcher has a safety feature that prevents horizontal launches. The launcher will only activate within 65° to 75° from the horizontal position.

1. Try activating the Strato Launcher without the Roto Rocket on the launcher.
2. Start with the pump pointing directly overhead.
3. Lower the nose of the launcher gradually, a half inch at a time. Press the launch button firmly each time you lower it, then release it.
4. When the launcher activates you have found the correct angle.

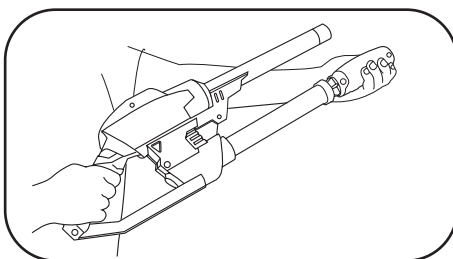
Troubleshooting Guide

• STRATO LAUNCHER DOES NOT ACTIVATE



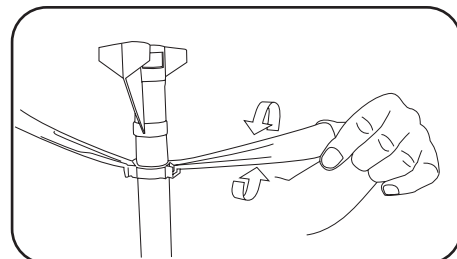
Make sure Strato Launcher is pointed in the correct launch angle (with the handle perpendicular to the ground). If the launcher is pointed too high or too low, it will not activate.

• ROCKET DOES NOT LAUNCH



Make sure you have pumped the launcher 10 to 20 times and that it is at the correct launch angle.

• ROTO ROCKET DOES NOT SPIN DURING REENTRY



Make sure you have twisted both rotor blades in the same direction.

KEEP THESE INSTRUCTIONS FOR FUTURE REFERENCE - DO NOT DISCARD

Problems? Before taking this product back to the store, contact us. Call 1-888-742-2484 or go to www.unclemilton.com



Uncle Milton Industries – Westlake Village, CA 91362
1-888-742-2484 Fax: 818.707.0878 www.unclemilton.com
© UMI, Inc. All rights reserved. Printed in China.