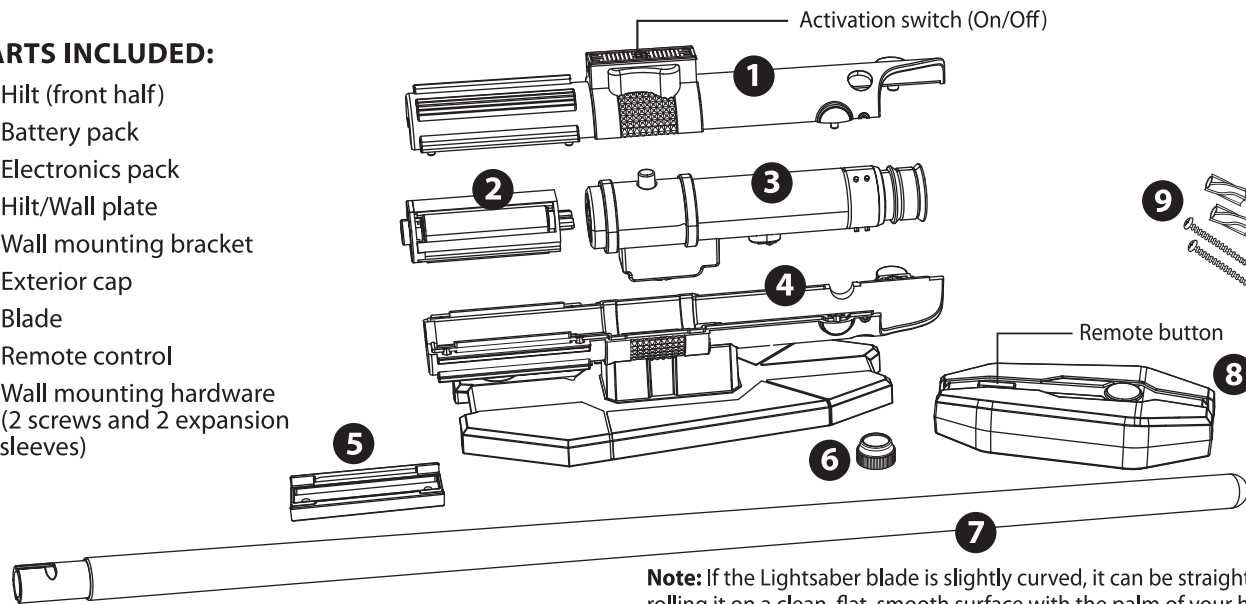




REMOTE CONTROLLED LIGHTSABER™ ROOM LIGHT

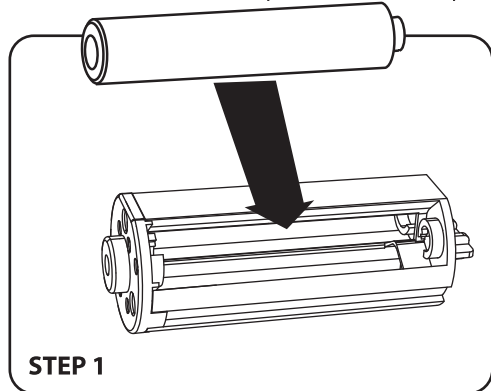
PARTS INCLUDED:

- 1 Hilt (front half)
- 2 Battery pack
- 3 Electronics pack
- 4 Hilt/Wall plate
- 5 Wall mounting bracket
- 6 Exterior cap
- 7 Blade
- 8 Remote control
- 9 Wall mounting hardware (2 screws and 2 expansion sleeves)

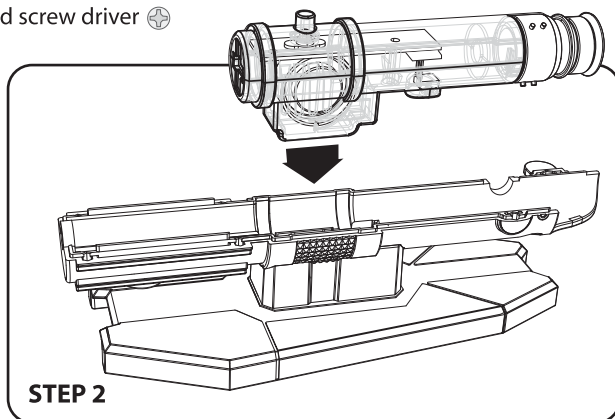


Note: If the Lightsaber blade is slightly curved, it can be straightened by rolling it on a clean, flat, smooth surface with the palm of your hand.

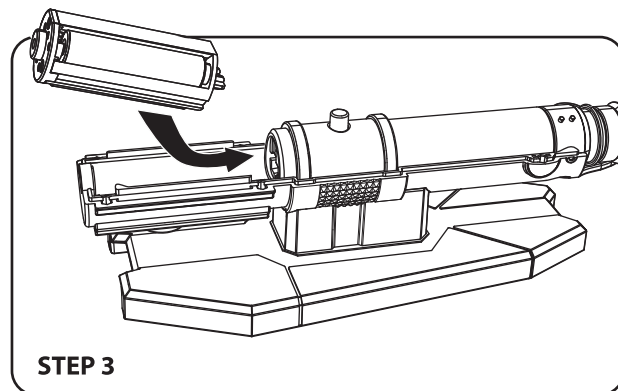
ASSEMBLY: Tool required – small Phillips-head screw driver



Insert 3 AAA batteries into Battery pack **2** as indicated in the battery compartment.



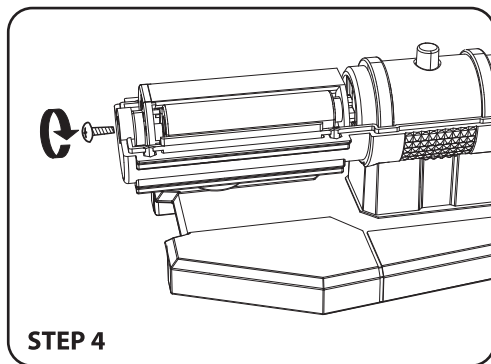
Place Electronics pack **3** into Hilt / Wall plate **4**.



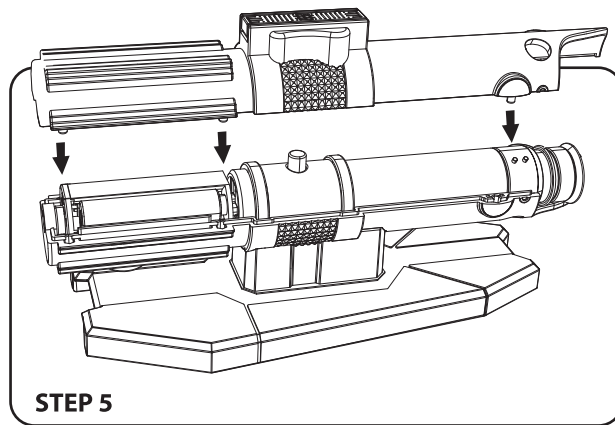
Insert Battery pack into Hilt handle. Align tab with slot in Electronics pack so contact is made.

KEEP THESE INSTRUCTIONS FOR FUTURE REFERENCE — DO NOT DISCARD

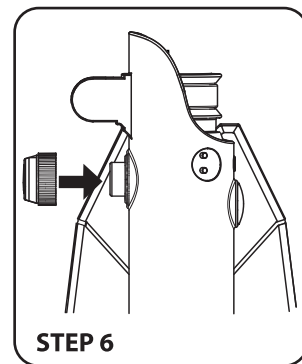
Questions? Comments?
info@unclemilton.com
1-888-742-2484
or visit us at
unclemilton.com



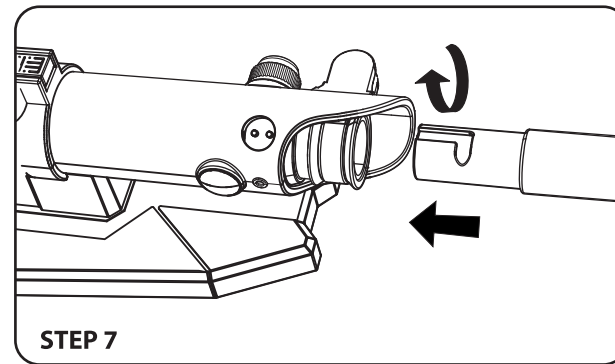
Tighten battery retainer screw to secure Battery pack in place.



Align Hilt (front half) **1** using location pins and press to close.

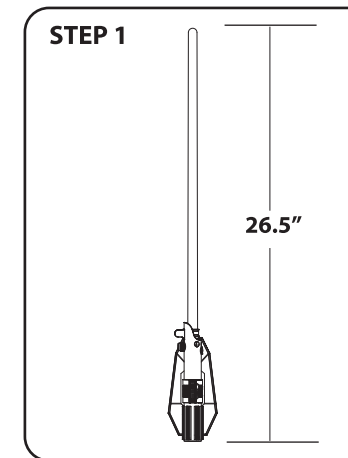


Slide Exterior cap **6** over Hilt post.

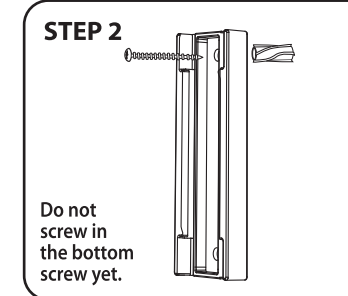


Insert the Blade **7** into the Hilt. Align the groove in the blade, with tabs in Hilt and turn clockwise to lock it in place.

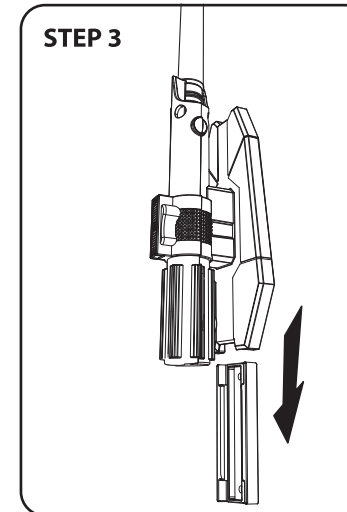
WALL INSTALLATION:



Choose a location for installation. Make sure there is an unobstructed area above for the blade.



Locate stud in wall or use the Expansion sleeves included and screw the Wall mounting bracket to the wall using the top hole only.



Slide the assembled Hilt and Wall plate half-way onto the Wall mounting bracket and mark a spot on the wall through the lower bracket-hole once the blade is vertical. Remove Hilt assembly, screw in lower Screw with Expansion sleeve, and replace assembly.

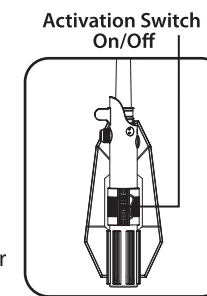
REMOTE CONTROL — INSTALLING BATTERIES

1. Use a Phillips-head screwdriver (not included) to remove battery door.
2. Insert 2 AAA batteries into remote. Make sure the "+" and "-" ends are inserted correctly as indicated in the battery compartment.
3. Replace battery door.

Warning: Product must be assembled by an adult. This product contains small parts which are necessary for assembly. Prior to and during assembly of this product, keep small parts out of children's reach. Small parts pose a choke hazard to children under 3 years.

USER GUIDE: Caution: Do not view light source directly

1. To turn on lightsaber, press the activation switch on the front of the lightsaber handle.
2. Use the remote button to cycle through the color modes.
3. You can also use the button on the lightsaber to cycle through the color modes.
4. To turn the light OFF, cycle through all 9 modes until the lightsaber blade turns off and you hear the lightsaber shut-off sound.
5. To conserve battery life, your lightsaber will turn off automatically after 15 minutes. **Note: Press the activation switch on the front of the lightsaber handle to turn the lightsaber back on.**



NOTE: This equipment has been tested and found to comply with the limits for a Class B digital device, pursuant to Part 15 of the FCC Rules. These limits are designed to provide reasonable protection against harmful interference in a residential installation. This equipment generates, uses and can radiate radio frequency energy and, if not installed and used in accordance with the instructions, may cause harmful interference to radio communications. However, there is no guarantee that interference will not occur in a particular installation. If this equipment does cause harmful interference to radio or television reception, which can be determined by turning the equipment off and on, the user is encouraged to try to correct the interference by one or more of the following measures:

- Reorient or relocate the receiving antenna.
- Increase the separation between the equipment and receiver.
- Connect the equipment into an outlet on a circuit different from that to which the receiver is connected.
- Consult the dealer or an experienced radio/TV technician for help.

This device complies with Part 15 of the FCC Rules. Operation is subject to the following two conditions:

- (1) This device may not cause harmful interference, and
- (2) This device must accept any interference received, including interference that may cause undesired operation.

Conforms to safety requirements of ASTM F963 and EN71

WARNING:
CHOKING HAZARD - Small parts.
Not for children under 3 years.

BATTERY SAFETY INFORMATION

- Non-chargeable batteries are not to be recharged
- Rechargeable batteries are only to be charged under adult supervision
- Rechargeable batteries are to be removed from the toy before being charged
- Different types of batteries or new and used batteries are not to be mixed
- Batteries are to be inserted with the correct polarity
- Exhausted batteries are to be removed from the toy
- The supply terminals are not to be short-circuited



© 2010 UMI. All rights reserved.
® and ™ designate U.S. trademarks of Uncle Milton Industries, Inc.
Westlake Village, CA 91362. Printed in China.
Product and colors may vary.

© 2010 Lucasfilm Ltd. & ® or ™ where indicated.
All rights reserved.