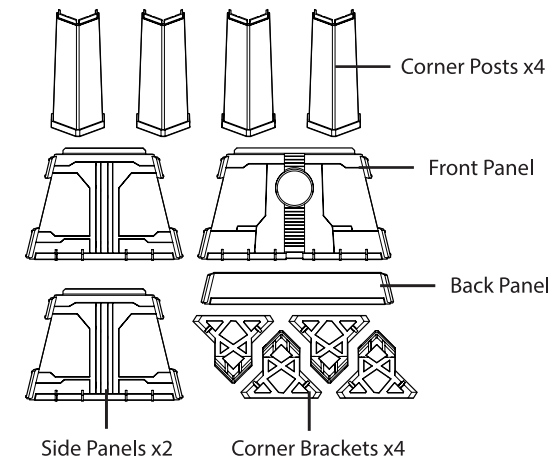


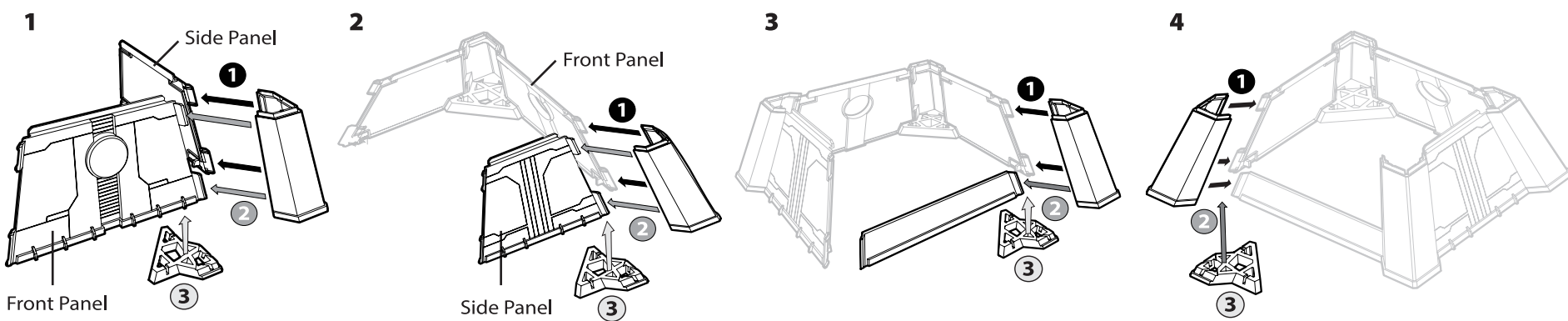
8+
15204

Uncle Milton
STAR WARS
SCIENCE
The Force™ Trainer II:
Hologram Experience

BASE PARTS

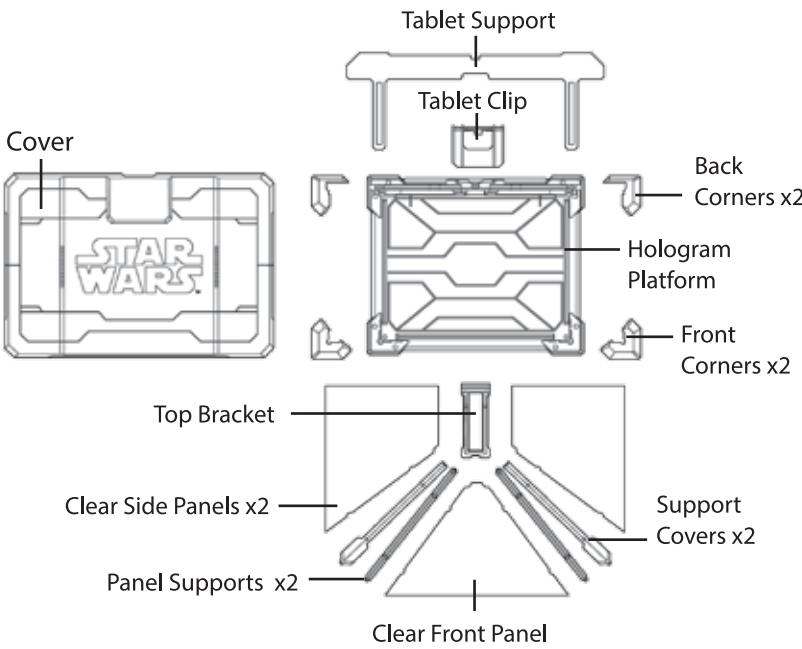


BASE ASSEMBLY

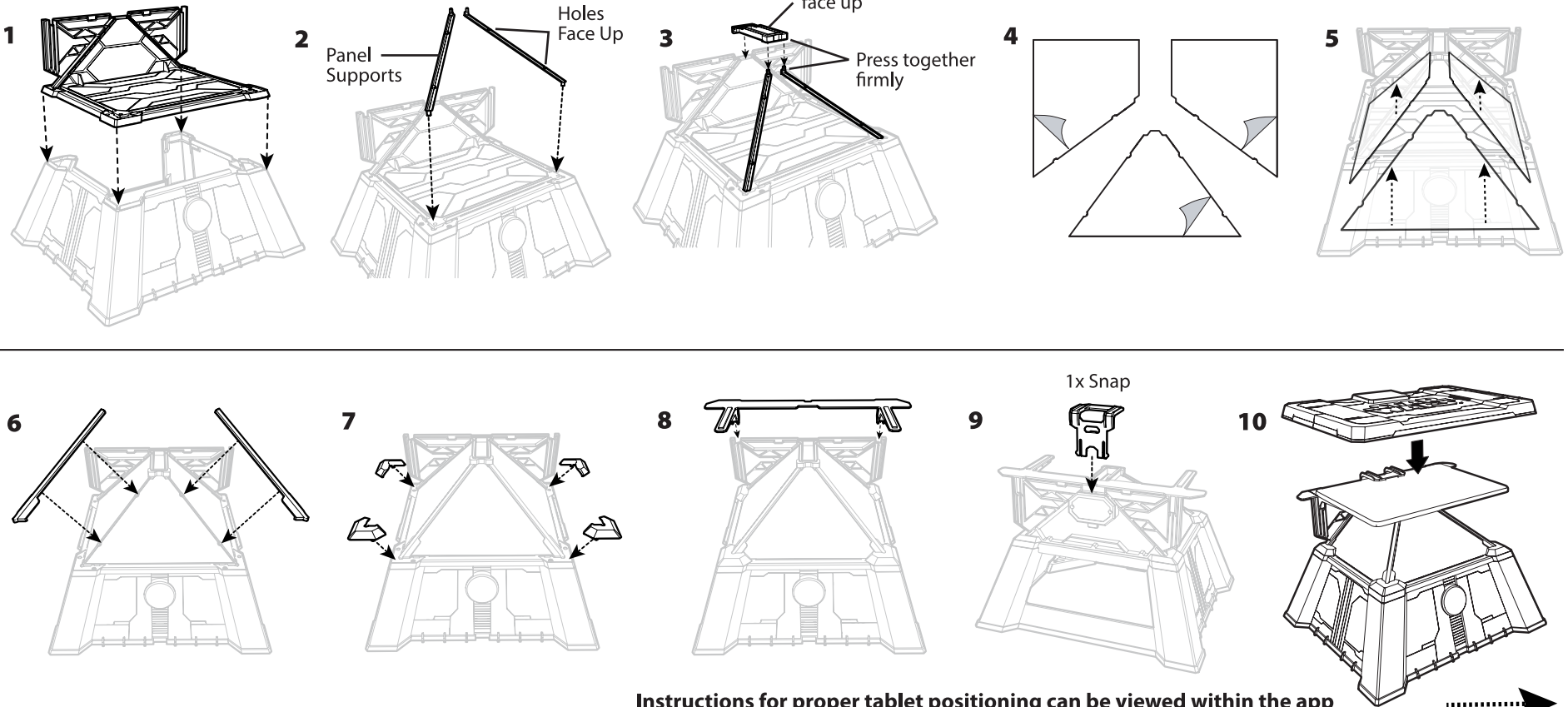


Welcome to The Force Trainer II: Hologram Experience! Using this powerful tool, you will learn to develop and focus your concentration – utilizing The Force™ - to move holograms with the power of your mind. Advance from Padawan, to Jedi Knight as your skill increases. Only the most accomplished will achieve the rank of Jedi Master. *May the Force be with you!*

HOLOGRAM DISPLAY PARTS



HOLOGRAM DISPLAY ASSEMBLY



Instructions for proper tablet positioning can be viewed within the app

USING YOUR TABLET

Using the Force Trainer II requires your own tablet device for connection with the headset. Only certain tablets are compatible with the product since the screen size of the device must correspond and align with the geometry of the Force Trainer II. The product is designed to work with the following most popular tablet devices including:

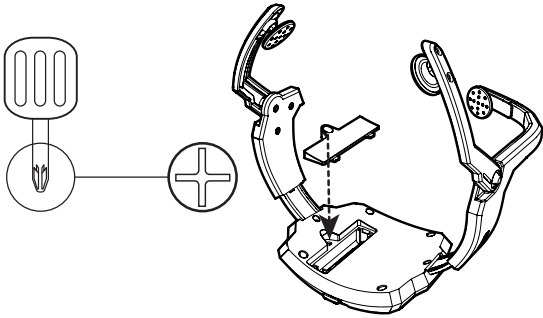


Made for
• iPad Air 2
• iPad Air
• iPad (3rd generation)
• iPad (4th generation)
• iPad 2



Made for Android devices including:
• Samsung Galaxy Tab S 10.5
• Samsung Galaxy Tab 10.1
• Samsung Galaxy Note 10.1

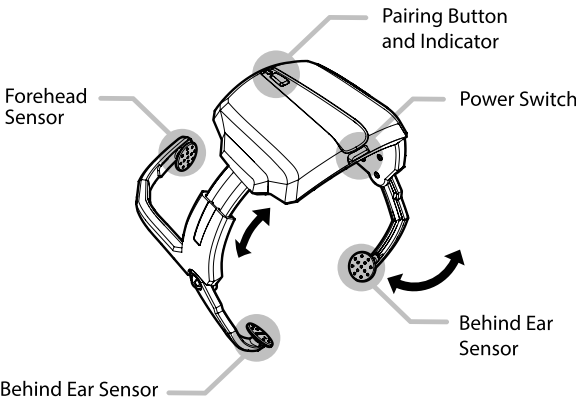
INSTALLING BATTERIES



AAA/LR03 x2 Batteries Not included
Requires 2 x 1.5V AAA/LR03 batteries

Make sure the “+” and “-” ends of the batteries are inserted correctly as indicated in the battery compartment.

USING THE HEADSET



PROPER HEADSET FIT



Forehead Sensor – Must lay flat above your eyebrow as shown, making direct contact with skin, clear of any hair.

To ensure hair is not in the way of proper sensor contact, some users with longer hair should tie their hair back.

Behind Ear Sensors – Must lay flat directly behind ear, making direct contact with skin, clear of any hair.



PAIRING THE HEADSET

The following are general pairing instructions Devices may vary. Consult your devices Bluetooth pairing instructions
1. Make sure Bluetooth is turned on in your devices settings.
2. Press the Pairing button on the headset.
In your device’s Bluetooth menu search for and select “Force Trainer II”.

NOTE: The headset will connect automatically to previously paired device.

CLEANING

Clean contacts on headset with rubbing alcohol on a paper towel. Lightly dust base and clear panels with a soft cloth. Do not use chemicals.

MENTAL PREPARATION

- Remain still during training. Unnecessary movement may affect your concentration.
- Clear your mind, relax and focus.
- Breathe slowly and evenly. If you are having trouble, try taking a deep breath while keeping your focus.
- Concentrate on the Hologram image. Visualize what you want it to do, imagining it in that position.
- You may also try a single idea in your mind or try focusing on an single point or detail on The Force Trainer II.

TROUBLESHOOTING

Problem	Solution
The Bluetooth indicator light is not turning on.	Replace the batteries in the headset.
The Bluetooth headset is not establishing a good connection with the app as shown in the corner of the Hologram platform (i.e. red or yellow icon instead of green)	Adjust the headset so that the Force sensors are placed flat on your forehead and directly behind your ears. Ensure that the sensors are making direct contact with your skin and not being blocked by hair, jewelry, or other things.
The Bluetooth headset is not pairing with the tablet device.	Check your Bluetooth pairing settings on your tablet device and make sure it is turned to “on”.

IMPORTANT!

DO NOT RETURN PRODUCT TO THE RETAILER

For more detailed Force Trainer II instructions, go to **starwarsscience.com**.

If you need assistance or replacement parts, contact us at **unclemilton.com**

or **call (888) 742-2484**

KEEP THESE INSTRUCTIONS FOR FUTURE REFERENCE - DO NOT DISCARD

NOTE: This equipment has been tested and found to comply with the limits for a Class B digital device, pursuant to Part 15 of the FCC Rules. These limits are designed to provide reasonable protection against harmful interference in a residential installation. This equipment generates, uses and can radiate radio frequency energy and, if not installed and used in accordance with the instructions, may cause harmful interference to radio communications. However, there is no guarantee that interference will not occur in a particular installation. If this equipment does cause harmful interference to radio or television reception, which can be determined by turning the equipment off and on, the user is encouraged to try to correct the interference by one or more of the following measures:

- Reorient or relocate the receiving antenna.
- Increase the separation between the equipment and receiver.
- Connect the equipment into an outlet on a circuit different from that to which the receiver is connected.
- Consult the dealer or an experienced radio/TV technician for help.

This device complies with Part 15 of the FCC Rules.

Operation is subject to the following two conditions:

- (1) This device may not cause harmful interference, and
- (2) This device must accept any interference received, including interference that may cause undesired operation.

This device complies with RSS-210 of Industry Canada. Operation is subject to the following two conditions: (1) this device may not cause harmful interference and (2) this device must accept any interference received, including interference that may cause undesired operation

Ce dispositif est conforme au CNR-210 d'Industrie Canada. L'utilisation de ce dispositif est autorisée seulement aux conditions suivantes : (1) il ne doit pas produire de brouillage et (2) l'utilisateur du dispositif doit être prêt à accepter tout brouillage radioélectrique reçu, même si ce brouillage est susceptible de compromettre le fonctionnement du dispositif.

Hereby, Uncle Milton Industries, Inc, declares that The Force Trainer II is in compliance with the essential requirements and other relevant provisions of Directive 1999/5/EC.

The declaration of conformity is held by:
Manufacturer Name: Uncle Milton Industries, Inc.
Manufacturer Address: P.O. Box 6281, Thousand Oaks, CA 91359 USA

Caution: changes or modifications not expressly approved by the party responsible for compliance could void the user's authority to operate the equipment.

Conforms to safety requirements of ASTM F963

IMPORTANT: In an environment with electrostatic discharge, the product may malfunction. In this case, please remove the batteries and wait 5 minutes and then replace the batteries.

BATTERY SAFETY INFORMATION

- Only adults should install and replace batteries.
- Non-rechargeable batteries are not to be recharged.
- Rechargeable batteries are to be removed from the toy before being charged.
- Rechargeable batteries are only to be charged under adult supervision.
- Different types of batteries or new and used batteries are not to be mixed.
- Batteries are to be inserted with the correct polarity.
- Exhausted batteries are to be removed from the toy.
- The supply terminals are not to be short-circuited.
- Do not mix old and new batteries.
- Do not mix alkaline, standard (carbon-zinc) or rechargeable (nickel-cadmium) batteries.
- Do not dispose of batteries in fire. Battery may explode or leak.
- Batteries should be recycled or disposed of as per state and local guidelines.



WARNING:

CHOKING HAZARD - Small parts.
Not for children under 3 years.



Apple and the Apple logo are trademarks of Apple Inc., registered in the U.S. and other countries. App Store is a service mark of Apple Inc.

This product and its batteries must be disposed of separately at your local waste recycling centre. Do not dispose them in your household waste bin.



© 2015 UMI. All rights reserved.
.* and TM* designate U.S. trademarks of Uncle Milton Industries, Inc.
P.O. Box 6281 Thousand Oaks, CA 91359 USA.
Printed in China. Product and colors may vary.

© & ™ Lucasfilm Ltd. All rights reserved.

15204-0250-0615-V02