

Batteries not included.
Requires 2 AA / LR06 batteries.

T-REXcavator™

Dinosaur Excavation Game

The skeleton of an extinct *T. rex* has been discovered! Now it's up to you to carefully remove each bone from the dig site. Draw a card, answer the question correctly and use the Excavation Tool...but be very careful! Don't touch the sides of the pit, or the *T. rex* will roar back to life. Collect the most bones and win!

Contents:

- 1 Electronic excavation site
- 12 Excavation game pieces
- 12 Bone excavation cards
- 36 Trivia cards
- 1 Excavation tool

PARENTS:

Replacing Batteries

Tool required – small Phillips-head screw driver 

1. Using a Phillips-head screwdriver, remove the battery compartment cover.
2. Install 2 fresh 1.5v AA/LR06 button cell batteries only. Make sure the "+" and "-" ends are inserted correctly, as indicated in the battery compartment.
3. Replace the battery compartment cover. Do not over-tighten screw.

Bone Placement: Place all bones and the egg in the appropriate pits, as shown below.

Bone Xcavation cards: Shuffle and place the 12 Bone Excavation Cards facedown in a pile next to the Excavation Site.

How to Play (2 - 4 Players)

Begin by choosing a player to go first (player 1). Another player takes a T. rex Trivia Card from the top of the deck and reads the question out loud to player 1.

If player 1 answers the T. rex Trivia question incorrectly, the card goes to the bottom of the deck and it is now player 2's turn.

If player 1 answers the question correctly, he/she takes a Bone Excavation Card from the top of the bone deck. He/she then grasps the Excavation Tool and attempts to remove that bone from the Excavation Site without touching the sides of the bone pit. If successful, player 1 keeps the bone and places it in his/her bone pile. If he/she fails and the mighty *T. rex* roars, the bone goes back into the pit and it's player 2's turn.

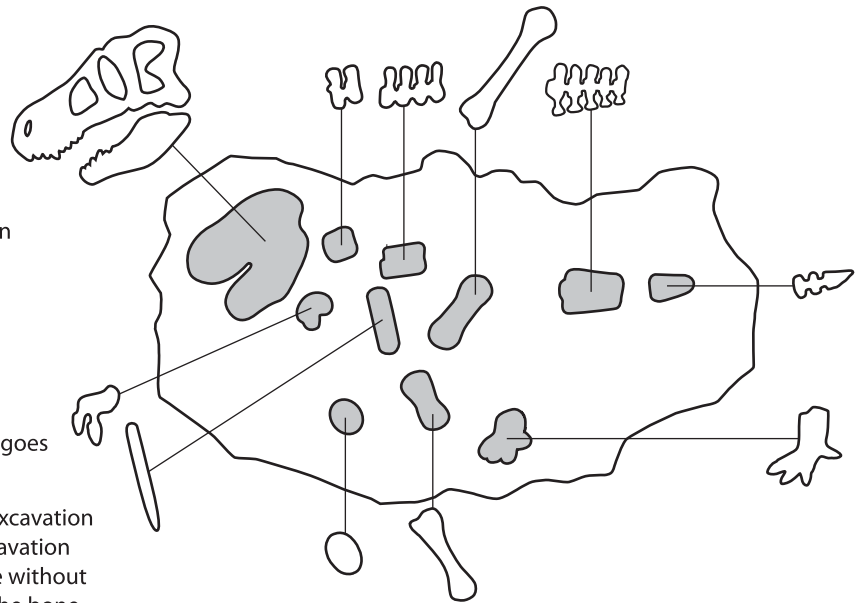
Play continues until all of the *T. rex* bones and the egg have been successfully removed from the Excavation Site. The player who successfully removes the most from the excavation site is the winner!

How To Play (1 Player)

Challenge yourself to successfully remove each bone and egg from the Excavation Site. Time yourself and try and beat your best time!

BATTERY SAFETY INFORMATION

- Non-rechargeable batteries are not to be recharged.
- Rechargeable batteries are to be removed from the toy before being charged.
- Rechargeable batteries are only to be charged under adult supervision.
- Different types of batteries or new and used batteries are not to be mixed.
- Batteries are to be inserted with the correct polarity.
- Exhausted batteries are to be removed from the toy.
- The supply terminals are not to be short-circuited.
- Do not mix old and new batteries.
- Do not mix alkaline, standard (carbon-zinc) or rechargeable (nickel-cadmium) batteries.
- Do not dispose of batteries in fire. Battery may explode or leak.



WARNING:
CHOKING HAZARD - Small parts.
Not for children under 3 yrs.